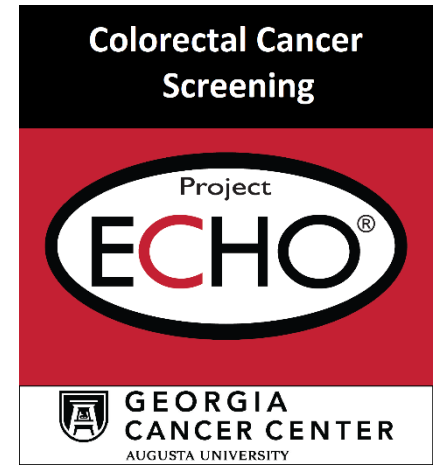


TeleECHO™ CRC Screening

Georgia Colorectal Cancer Control Program



“Rurality matter: County-Level colorectal cancer (CRC) screening rates on CRC survival in the state of Georgia.”

Presenter

Meng-Han Tsai, PhD
Assistant Professor
Georgia Prevention Institute
Georgia Cancer Center

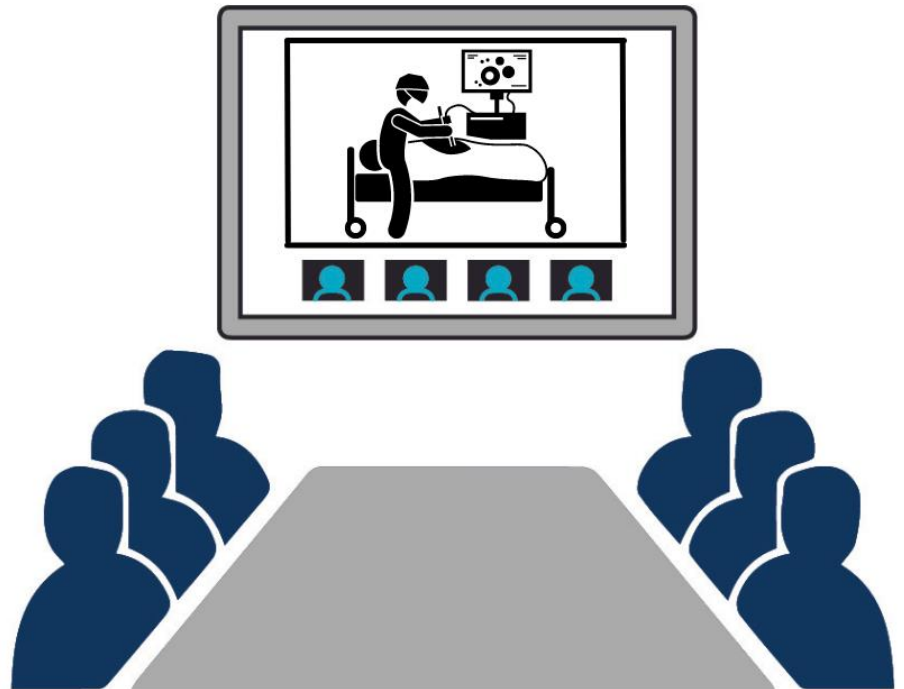
Case Topic:

“Alaska Native Tribal Health Consortium (ANTHC) Colorectal Cancer Control Program Partner Gathering”

Target Audience

Physicians, Nurse Practitioners, Physician Assistants, and other Healthcare Providers

“Moving knowledge, not patients.”



Get expert support for your patients in a virtual learning network with Colorectal Cancer experts.

[Register Here](#)

Wednesday, June 5th, 2024
4:00 – 5:00 p.m. (ET)

ACCREDITATION STATEMENTS:



JOINTLY ACCREDITED PROVIDER™
INTERPROFESSIONAL CONTINUING EDUCATION

In support of improving patient care, this activity has been planned and implemented by Centers for Disease Control and Prevention and Augusta University. The Centers for Disease Control and Prevention is jointly accredited by the Accreditation Council for Continuing Medical Education (ACCME), the Accreditation Council for Pharmacy Education (ACPE), and the American Nurses Credentialing Center (ANCC), to provide continuing education for the healthcare team.

CME: The Centers for Disease Control and Prevention designates this **live** activity for a maximum of **(1.0** AMA PRA Category 1 Credits™. Physicians should claim only the credit commensurate with the extent of their participation in the activity.

CNE: The Centers for Disease Control and Prevention designates this activity for **1.0** nursing contact hours.

AAPA CME: The Centers for Disease Control and Prevention has been authorized by the American Academy of PAs (AAPA) to award AAPA Category 1 CME credit for activities planned in accordance with AAPA CME Criteria. This activity is designated for **1.0** AAPA Category 1 CME credits. Approval is valid until **{August 2025}**. PAs should only claim credit commensurate with the extent of their participation.

CEU: The Centers for Disease Control and Prevention is authorized by IACET to offer **0.1** CEU's for this program.

DISCLOSURE: In compliance with continuing education requirements, all planners and presenters/moderators must disclose all financial relationships, in any amount, with ineligible companies over the previous 24 months as well as any use of unlabeled product(s) or products under investigational use.

CDC, our planners, and presenters/moderators wish to disclose they have no financial relationship(s) with ineligible companies.

Presentations will not include any discussion of the unlabeled use of a product or a product under investigational use. CDC did not accept financial or in-kind support from any ineligible company for this continuing education activity.

Instructions for Obtaining Continuing Education (CE)

To receive continuing education (CE) for **WC4715(SC)-Georgia Colorectal Cancer Control Program CRC TeleECHO Project: ColoRectal Cancer: Caring for the Community**, please visit **CDC TRAIN** and search for the course in the Course Catalog using **WC4715(SC)**. Follow the steps below by **Jul 3, 2024**

1. Register for and complete the course.
2. Pass the post-assessment at 75%.
3. Complete the evaluation.
4. Visit Your Learning to access your certificates and transcript.

The registration code is **GCRCCP 0524**

FEES: There are no fees for CE.